

# Postal Code 78758

# Residential Statistics



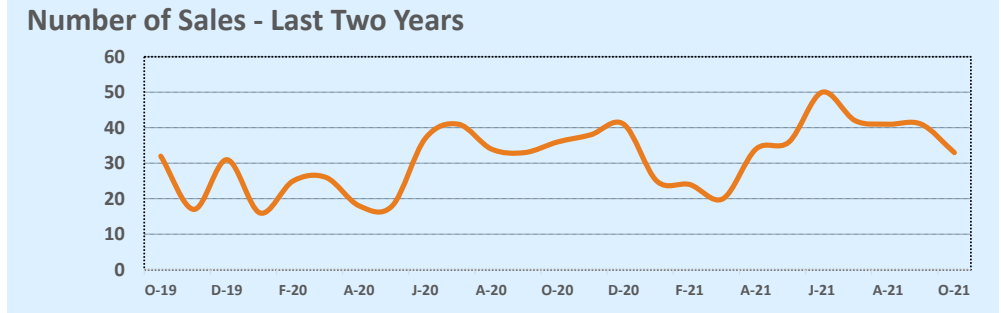
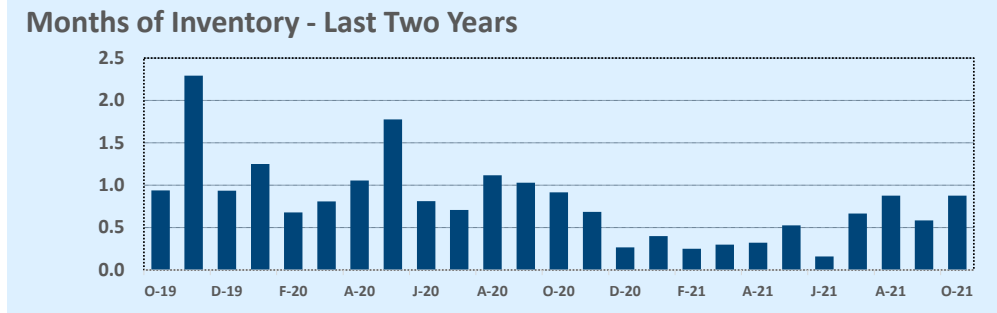
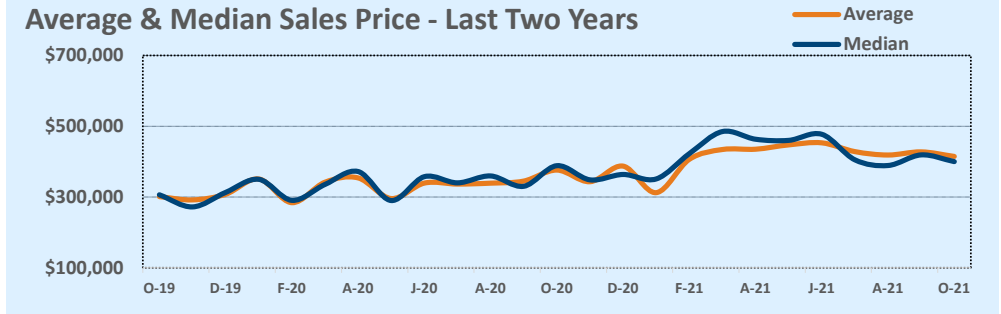
# October 2021

Listings	This Month			Year-to-Date		
	Oct 2021	Oct 2020	Change	2021	2020	Change
Single Family Sales	22	30	-26.7%	238	205	+16.1%
Condo/TH Sales	11	6	+83.3%	108	79	+36.7%
<b>Total Sales</b>	<b>33</b>	<b>36</b>	<b>-8.3%</b>	<b>346</b>	<b>284</b>	<b>+21.8%</b>
New Homes Only	--	1	--	3	1	+200.0%
Resale Only	33	35	-5.7%	343	283	+21.2%
Sales Volume	\$13,683,929	\$13,540,378	+1.1%	\$146,159,947	\$96,103,161	+52.1%
New Listings	38	39	-2.6%	402	368	+9.2%
Pending	--	--	--	--	--	--
Withdrawn	3	3	--	7	11	-36.4%
Expired	3	3	--	7	11	-36.4%
Months of Inventory	0.9	0.9	-4.1%	N/A	N/A	--

Price Range	This Month			Year-to-Date		
	New	Sales	DOM	New	Sales	DOM
\$149,999 or under	--	--	--	3	8	32
\$150,000- \$199,999	1	2	36	26	22	15
\$200,000- \$249,999	1	2	4	20	13	5
\$250,000- \$299,999	3	4	6	57	38	8
\$300,000- \$349,999	6	2	4	35	34	6
\$350,000- \$399,999	2	6	25	47	33	19
\$400,000- \$449,999	4	5	23	48	39	10
\$450,000- \$499,999	5	3	19	51	44	9
\$500,000- \$549,999	6	--	--	38	32	7
\$550,000- \$599,999	4	7	8	46	46	7
\$600,000- \$699,999	5	2	6	26	34	8
\$700,000- \$799,999	--	--	--	1	2	4
\$800,000- \$899,999	--	--	--	1	1	5
\$900,000- \$999,999	1	--	--	1	--	--
\$1M - \$1.99M	--	--	--	2	--	--
\$2M - \$2.99M	--	--	--	--	--	--
\$3M+	--	--	--	--	--	--
<b>Totals</b>	<b>38</b>	<b>33</b>	<b>15</b>	<b>402</b>	<b>346</b>	<b>10</b>

Average	This Month			Year-to-Date		
	Oct 2021	Oct 2020	Change	2021	2020	Change
List Price	\$410,725	\$377,979	+8.7%	\$399,329	\$338,475	+18.0%
List Price/SqFt	\$306	\$252	+21.6%	\$285	\$231	+23.2%
Sold Price	\$414,665	\$376,122	+10.2%	\$422,428	\$338,391	+24.8%
Sold Price/SqFt	\$311	\$251	+23.8%	\$301	\$232	+30.1%
Sold Price / Orig LP	101.7%	99.9%	+1.8%	106.1%	100.2%	+5.9%
Days on Market	15	36	-57.4%	10	19	-47.7%

Median	This Month			Year-to-Date		
	Oct 2021	Oct 2020	Change	2021	2020	Change
List Price	\$399,800	\$384,700	+3.9%	\$405,000	\$339,900	+19.2%
List Price/SqFt	\$313	\$243	+28.9%	\$281	\$229	+22.8%
Sold Price	\$400,000	\$388,500	+3.0%	\$425,000	\$343,000	+23.9%
Sold Price/SqFt	\$303	\$241	+25.9%	\$298	\$232	+28.5%
Sold Price / Orig LP	100.3%	100.0%	+0.3%	103.4%	100.0%	+3.4%
Days on Market	7	8	-6.7%	5	5	--



Based on information from the Austin Board of REALTORS® (alternatively, from ACTRIS). Neither the Board nor ACTRIS guarantees or is in any way responsible for its accuracy. The Austin Board of REALTORS®, ACTRIS and their affiliates provide the MLS and all content therein "AS IS" and without any warranty, express or implied. Data maintained by the Board or ACTRIS may not reflect all real estate activity in the market.